

ACT41 Curtain Track

Fitting, operation and maintenance instructions

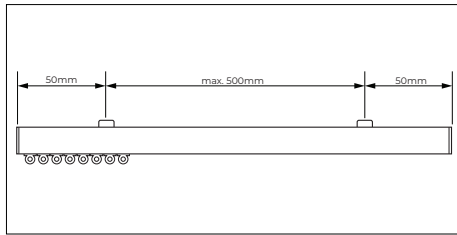
Warning! The operating instructions must be read before operating the blind.

Fitting Instructions for ACT41 Curtain Tracks

This procedure can be completed by non-professionals.

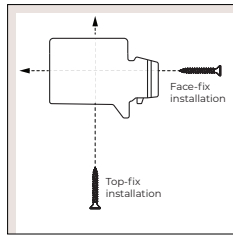
Step 1 - Position the brackets

Ensure that each supplied bracket is positioned at least 50 mm from each end of the track, with any remaining brackets spaced no more than 500 mm apart. Check that all brackets are aligned evenly before securing them in place.



Step 2 - Mark, drill, and secure the brackets

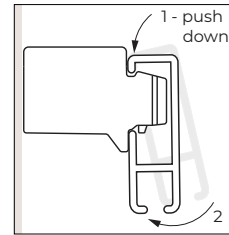
If necessary, mark the screw positions by pencil through the bracket slots. Drill and plug the holes as required, then fix the brackets securely using appropriate fittings. (Please note that screws and fixings are not supplied).



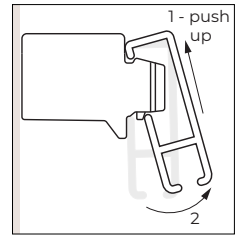
Universal Bracket | Top Fix or Face Fix Installation

Step 3 - Install the track

Once the brackets are securely fixed, remove the track from its packaging and carefully clip it into the brackets, and close the bracket lever to lock the track, ensuring that it is firmly secured in place.



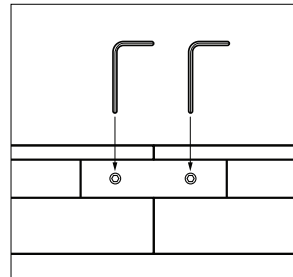
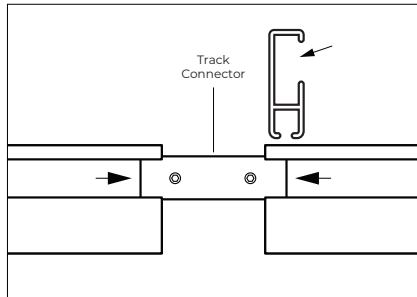
Track Installation



Track Removal

Joined tracks

If your track is longer than 5 metres, it will be supplied in two sections along with a Track Connector. To join sections, slide the provided Track Connector into the groove at the back of the track, and push the sections together until they are aligned. Once assembled, proceed to Step 3.



Fasten screws using Allen key

Note: The Universal Bracket is supplied as standard with ACT41 tracks. However, if your track includes a different bracket type, please refer to the installation instructions on our website by scanning the QR below.

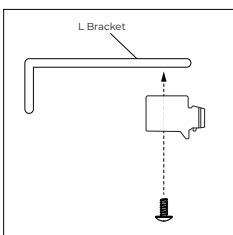


Fitting with L Bracket for double-track installation

This procedure can be completed by non-professionals.

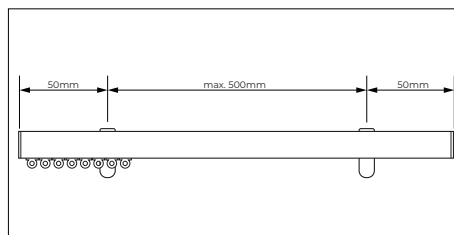
Step 1 - Bracket assembly

Attach the Universal Bracket to the L Bracket and secure it in place using the supplied screw.



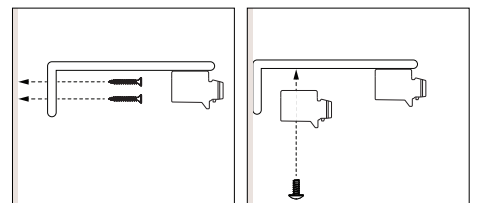
Step 2 - Bracket positioning

Ensure that each bracket is positioned at least 50 mm from each end of the track, with any remaining brackets spaced no more than 500 mm apart. Check that all brackets are aligned evenly before securing them in place.



Step 3 - Mark, drill, and secure the brackets

If necessary, mark the screw positions by pencil through the bracket slots. Drill and plug the holes as required, then fix the brackets securely using appropriate fittings. (Please note that screws and fixings are not supplied). Next attach the remaining Universal Bracket.



Step 4 - Install the track

Once the brackets are securely fixed, remove the track from its packaging and carefully clip it into the brackets, ensuring that it is firmly secured in place. Refer to Step 3 for single track installation.

Operation & Maintenance

Warning! The operating instructions must be read before operating the blind.

Operating instructions

1. Ensure the track and curtain fabric is free of obstructions and that gliders move smoothly.
2. Gently pull the curtains along the track to open or close. Avoid forcing them to prevent damage

Maintenance Instructions

This product is designed to be maintenance-free; however, we recommend carrying out regular visual inspections to ensure that no components are damaged, as this could lead to operating difficulties or pose a safety risk. If any maintenance is required, it should be completed promptly by a reputable blind company.

For smooth glider movement, a small amount of silicone-based lubricant may be applied.

Do not hang heavy items on the curtain track or pull forcefully. For safety and performance, do not make alterations to the track.